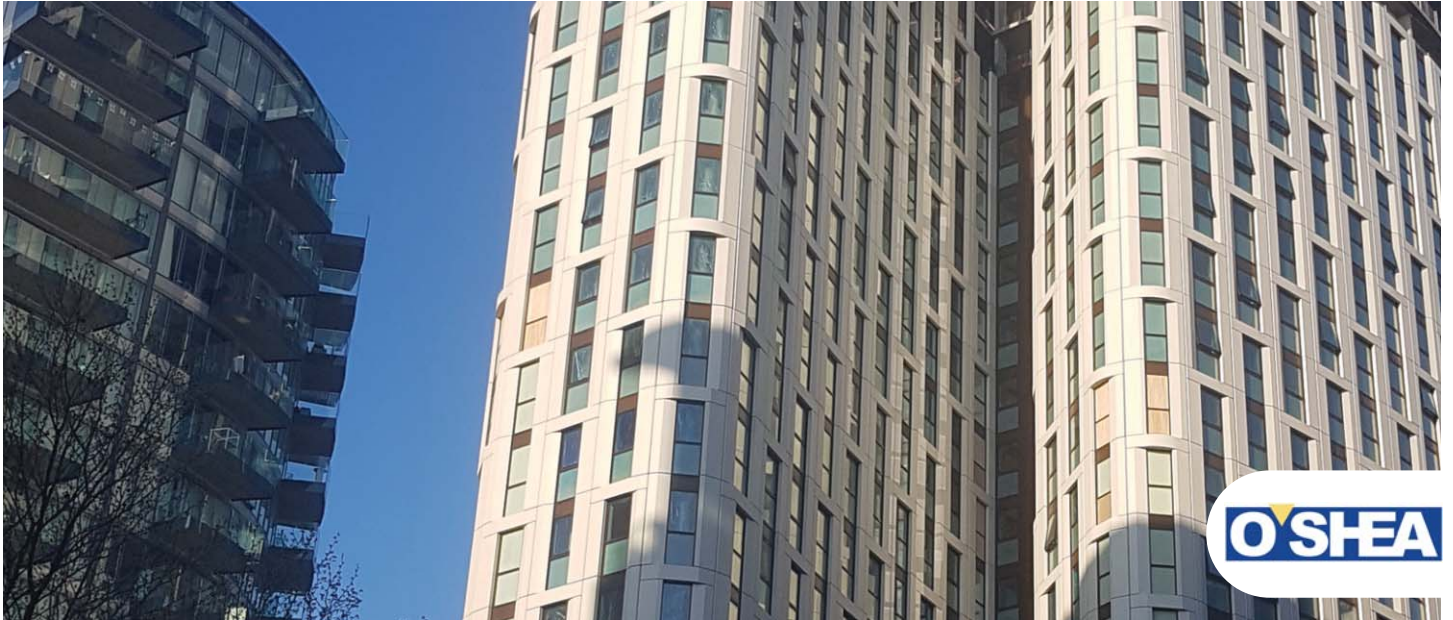


RESIDENTIAL, OFFICES, RESTAURANT, BARS AND HEALTH CENTRE

LOCATION: THE COLLECTIVE, CANARY WHARF



CLIENT:	CJ O'SHEA
PROJECT VALUE:	£3.6 MILLION
PROJECT DESCRIPTION:	Residential development of 708 serviced studio apartments over 23 floors including bars, restaurants, cafe, gym and wellbeing facilities, swimming pool and offices
SCOPE OF WORKS:	Dry Lining, lightweight metal stud partition systems, plastering, suspended ceilings and decorations



Grays Dry Lining is a diversifying commercial interiors company with a reputation for innovation. Grays embraces values and performance that mean over the last 15 years it has established itself as one of the largest dry lining and interiors contractors in the UK.

Grays' experienced senior management oversee teams of technicians, site managers, contracts managers and quantity surveyors. It delivers a comprehensive package of services including dry lining, lightweight and load bearing metal stud partition systems, suspended ceilings, acoustic specialist ceilings, plastering and taped and jointed finishes. The company has a project management team that assists in the smooth running of your job and liaises between you, your client and materials manufacturers.

Grays also provides fit out, fire protection, floor screeding, decorating and finishings services through its group of companies.

